

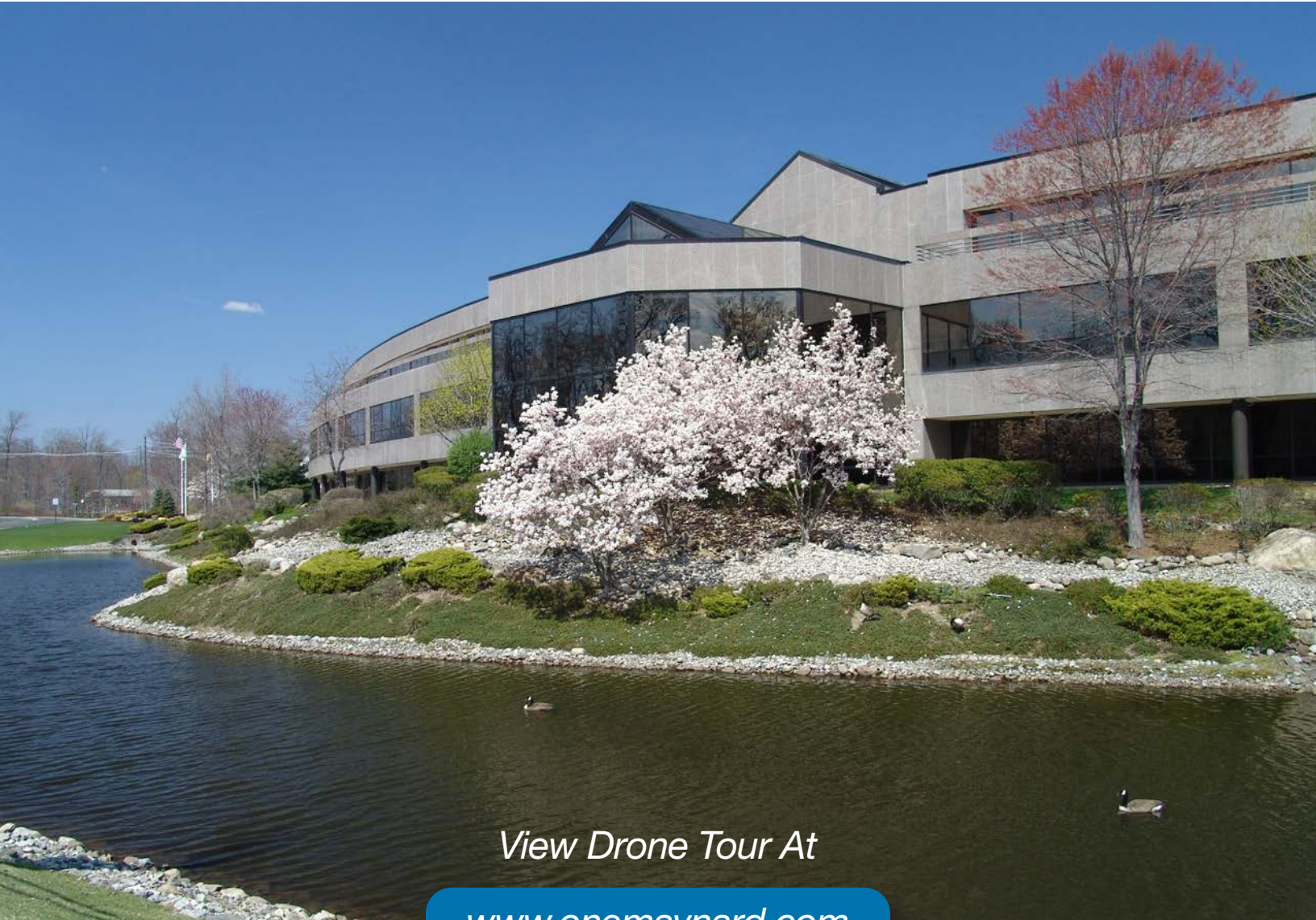


ONE
MAYNARD
DRIVE
PARK RIDGE, NJ

3,468 SF - 24,977 SF Available

Class A Office Building

Park-Like Setting



View Drone Tour At

www.onemaynard.com

For more information:

Andrew Somple, SIOR

201 488 5800 x151 | asomple@naihanson.com

Jessica Curry, CCIM

201 488 5800 x199 | jcurry@naihanson.com

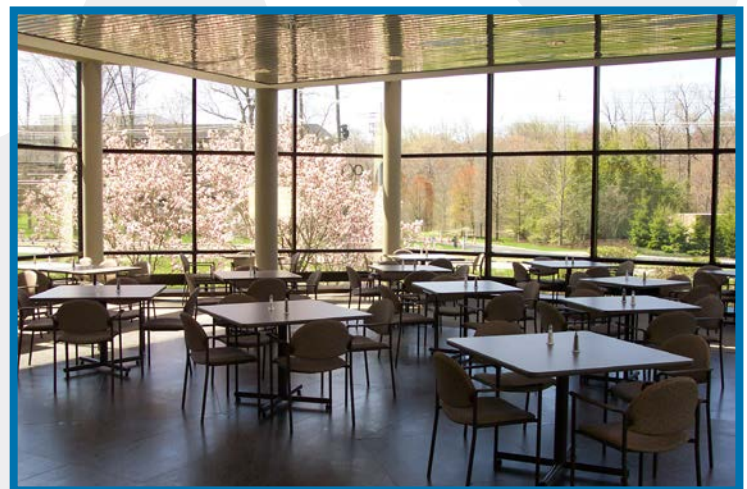
NAI James E. Hanson
COMMERCIAL REAL ESTATE SERVICES, WORLDWIDE

FOLLOW US!      | Offices: Teterboro | Parsippany | Allentown • naihanson.com | naisummit.com • Member of NAI Global with 325+ Offices Worldwide

THE INFORMATION CONTAINED HEREIN HAS BEEN OBTAINED FROM SOURCES CONSIDERED TO BE RELIABLE, BUT NO GUARANTEE OF ITS ACCURACY IS MADE BY NAI JAMES E. HANSON

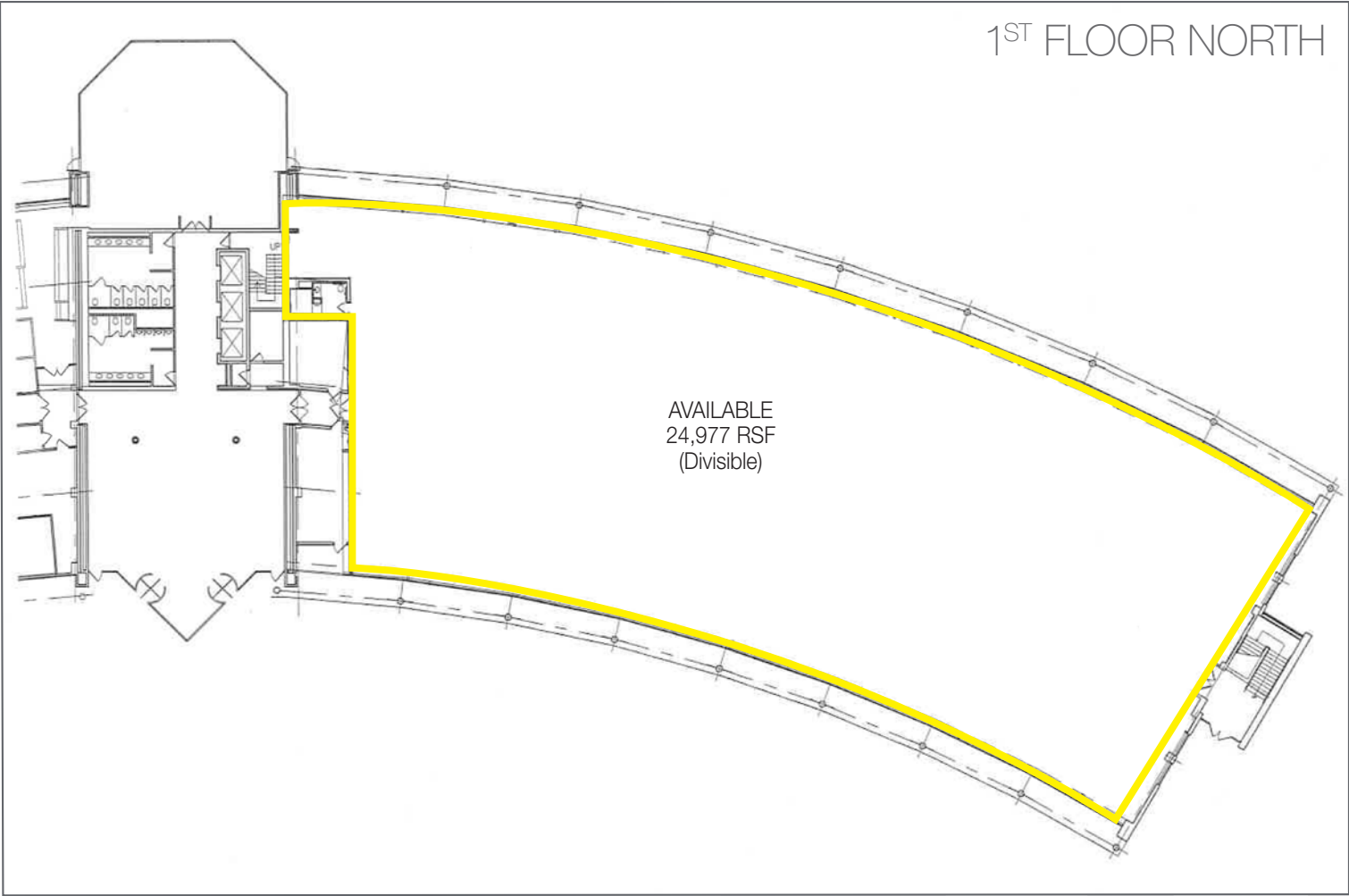
PROPERTY DETAILS

- 139,000 SF Class A building
- Three (3) story building
- Ownership and property management on site
- 555 spaces; Ratio 4:1000; reserved parking for key personnel
- Card-key access
- Digital interactive directory
- Glass atrium with seating
- 750 kW diesel backup generator
- Fiber optic connectivity available from multiple telecom providers
- Continuous window line
- Full-service cafeteria with seating on two (2) floors **OPEN** with WiFi service
- Pond/fountain & waterfall garden
- Wooded picnic area
- Walking distance to Marriott Hotel, Lifetime Fitness & Spa, Wegmans-anchored shopping center
- Within 1 mile of Garden State Parkway
- Close proximity to I-287, NY State Thruway, Palisades Interstate Parkway
- Park Ridge/Montvale submarket offers diverse mix of restaurants, shops, hotels, and daycare centers

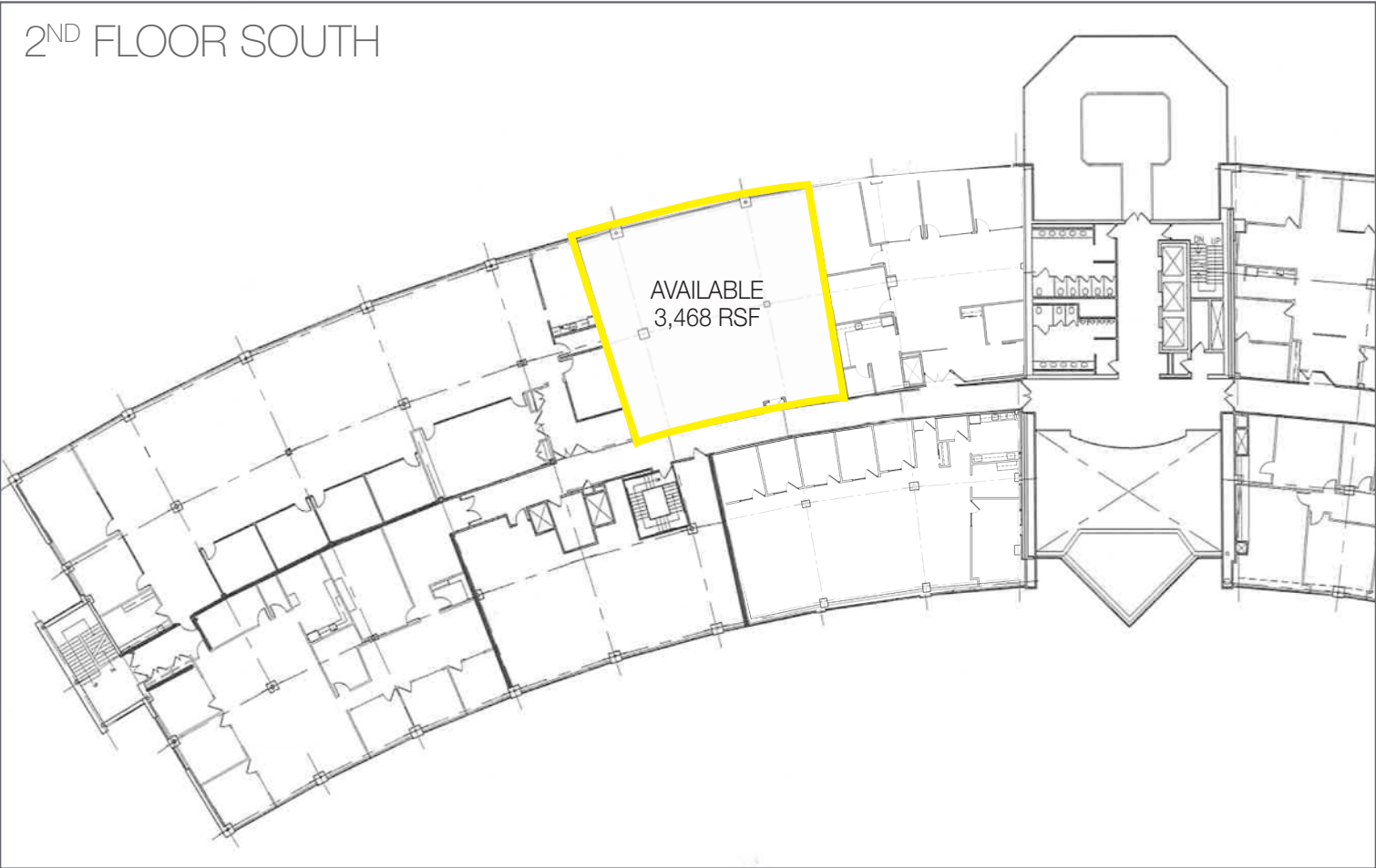


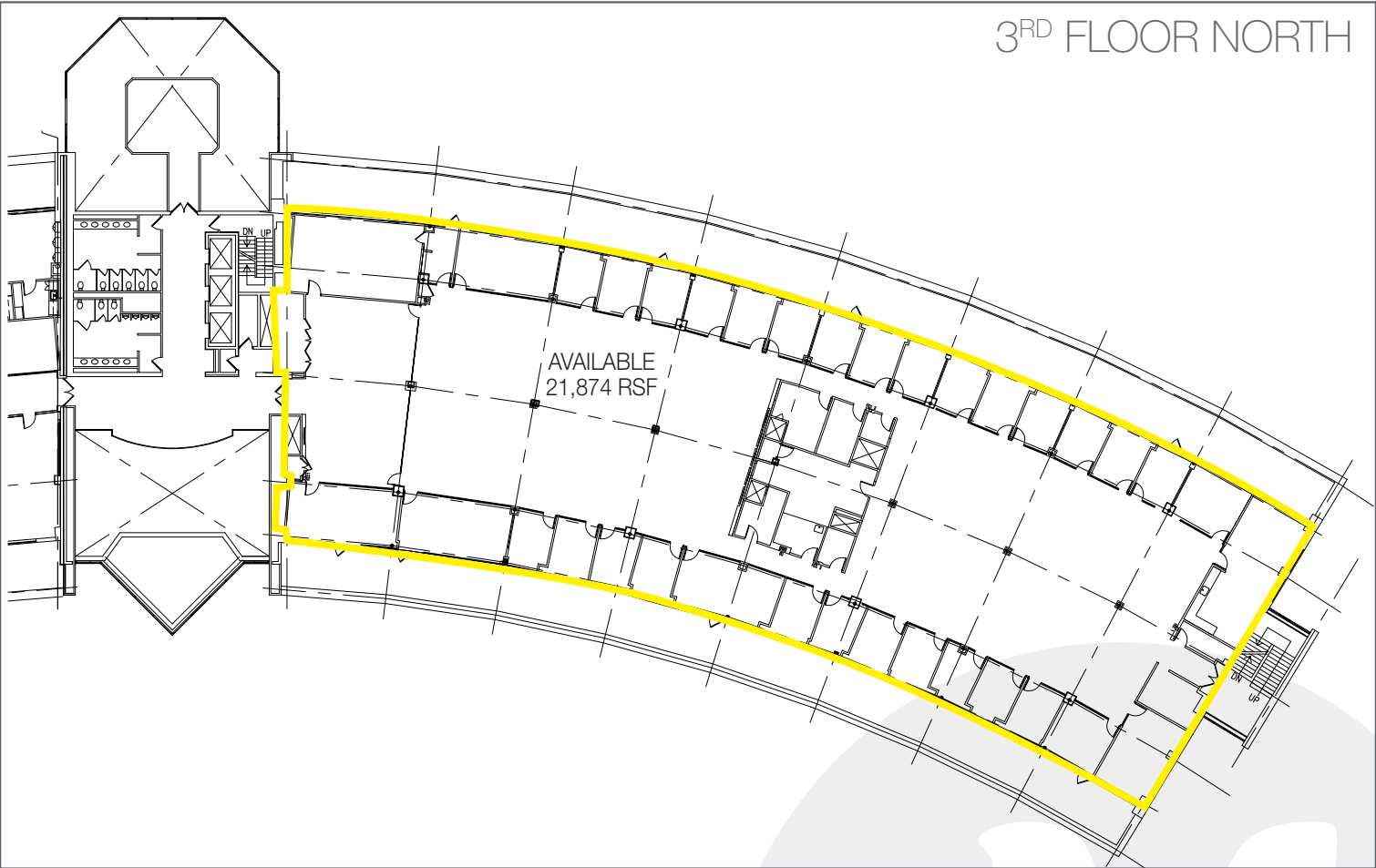
BUILDING
PHOTOS



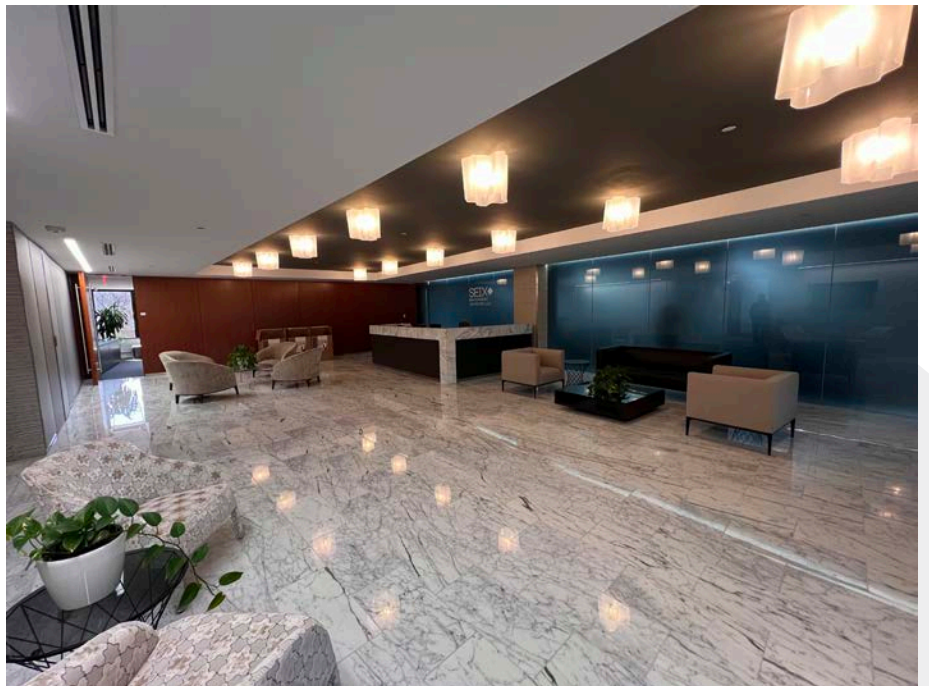


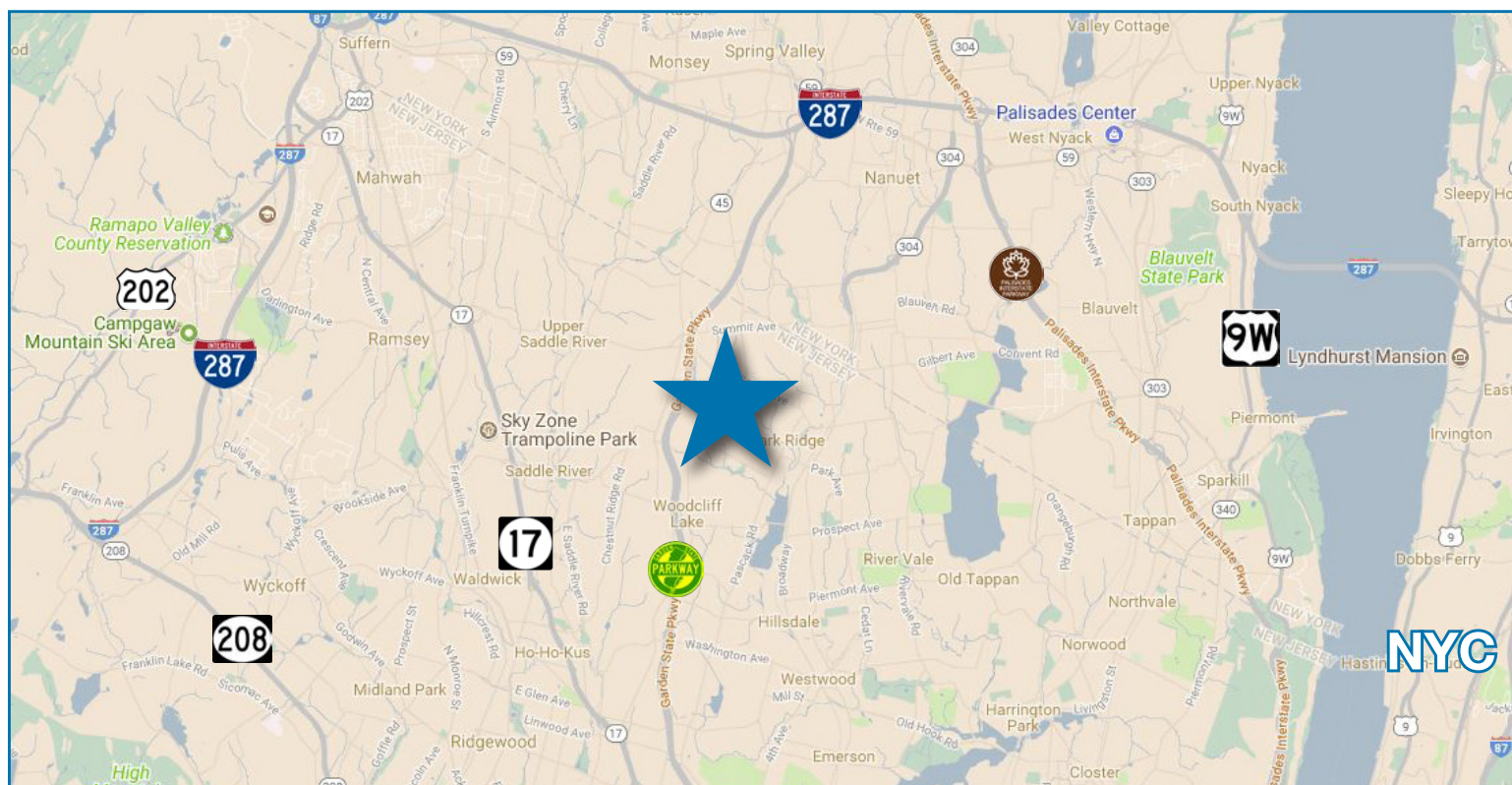
2ND FLOOR SOUTH





3RD FLOOR NORTH PHOTOS





www.onemaynard.com

**ONE
MAYNARD
DRIVE**
PARK RIDGE, NJ

Andrew Somple, SIOR

201 488 5800 x151 | asomple@naihanson.com

Jessica Curry, CCIM

201 488 5800 x199 | jcurry@naihanson.com