



**ONE
MAYNARD
DRIVE
PARK RIDGE, NJ**

3,206 - 24,977 SF Available

Class A Office Building

Park-Like Setting



*View Drone Tour
of this building at
www.onemaynard.com*

For more information:

Andrew Somple, SIOR

201 488 5800 x151 | asomple@naihanson.com

Justin Alessio

201 488 5800 x159 | jallessio@naihanson.com

Jessica Curry





201 488 5800 x199 | jcurry@naihanson.com

195 North Street, Suite 100
Teterboro, NJ 07608
201 488 5800

10 Lanidex Plaza West
Parsippany, NJ 07064
973 463 1011

naihanson.com

NAI James E. Hanson
COMMERCIAL REAL ESTATE SERVICES, WORLDWIDE

FOLLOW US!     | Member of NAI Global with 300+ Offices Worldwide

THE INFORMATION CONTAINED HEREIN HAS BEEN OBTAINED FROM SOURCES CONSIDERED TO BE RELIABLE, BUT NO GUARANTEE OF ITS ACCURACY IS MADE BY NAI JAMES E. HANSON

PROPERTY DETAILS

- 139,000 SF Class A building
- Three (3) story building
- Ownership, property management, day porter & security service on site
- 555 spaces; Ratio 4:1000; reserved parking for key personnel
- Card-key access
- Digital interactive directory
- Glass atrium with seating
- 750 kW diesel backup generator
- Fiber optic connectivity available from multiple telecom providers
- Continuous window line
- Full service cafeteria with seating on two (2) floors & WiFi service
- Pond/fountain & waterfall garden
- Wooded picnic area
- Walking distance to Marriott Hotel, Lifetime Fitness & Spa, Wegmans-anchored shopping center
- Within 1 mile of Garden State Parkway
- Close proximity to I-287, NY State Thruway, Palisades Interstate Parkway
- Park Ridge/Montvale submarket offers diverse mix of restaurants, shops, hotels, and daycare centers



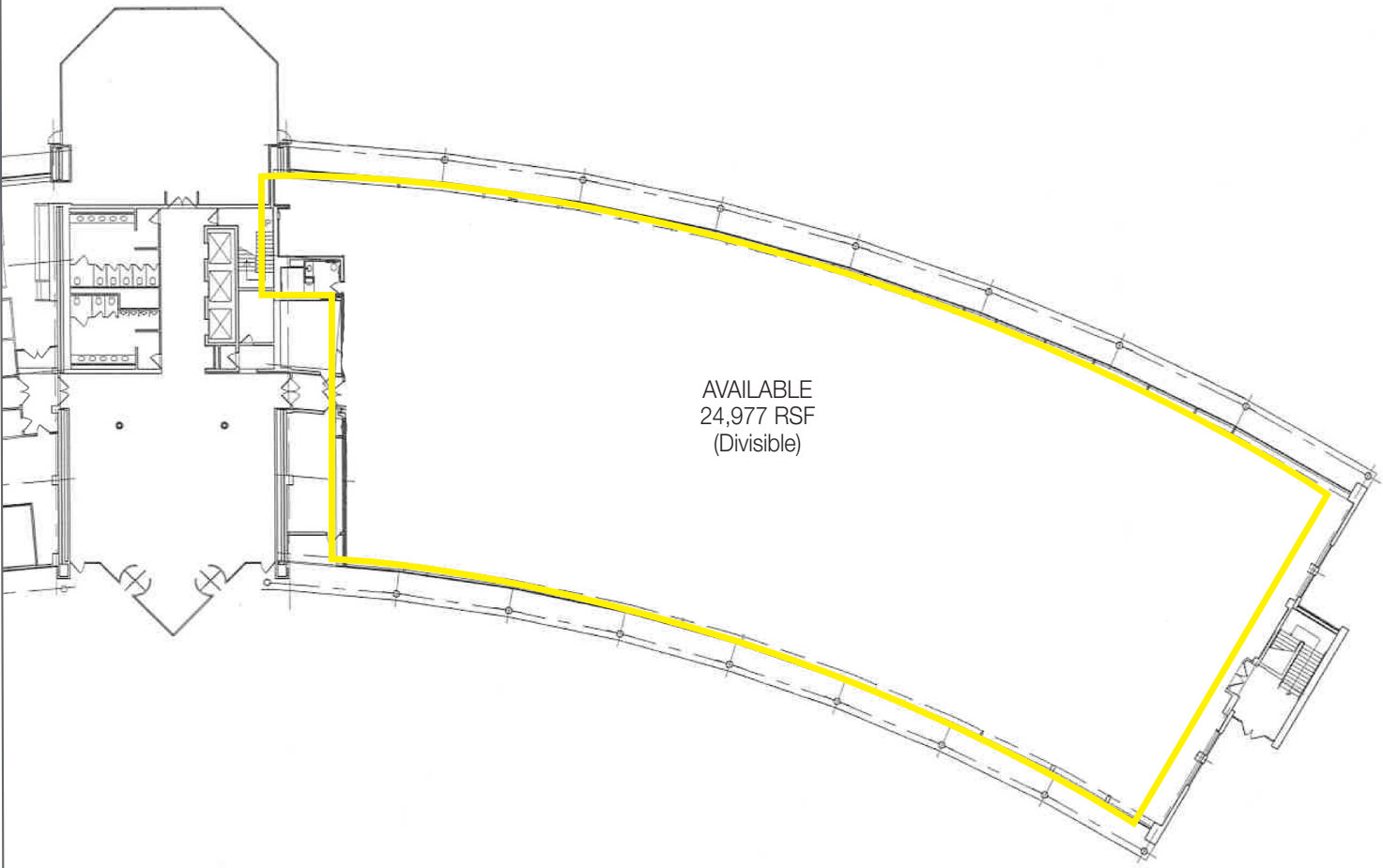
BUILDING PHOTOS



ONE MAYNARD DRIVE
PARK RIDGE, NJ



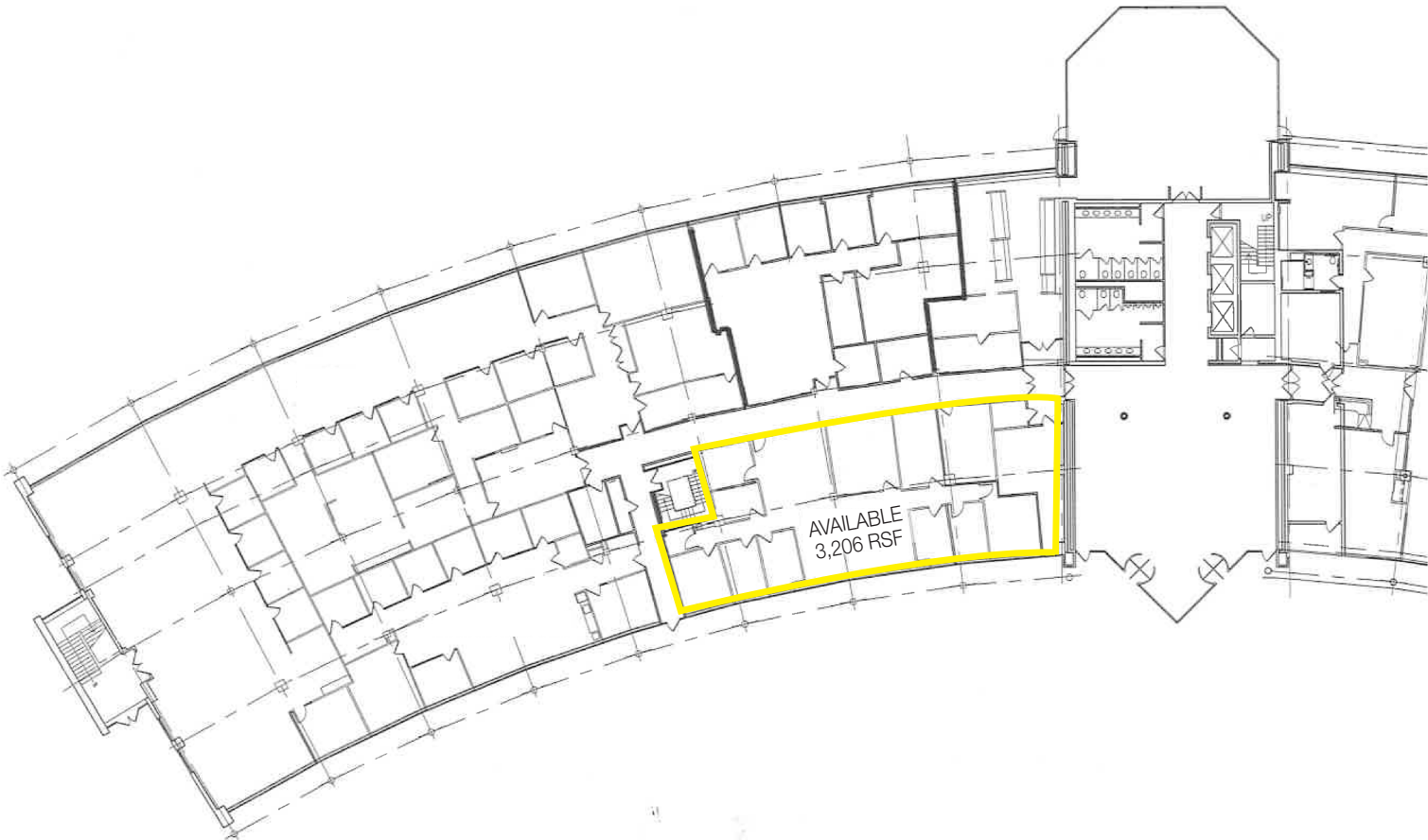
1ST FLOOR NORTH



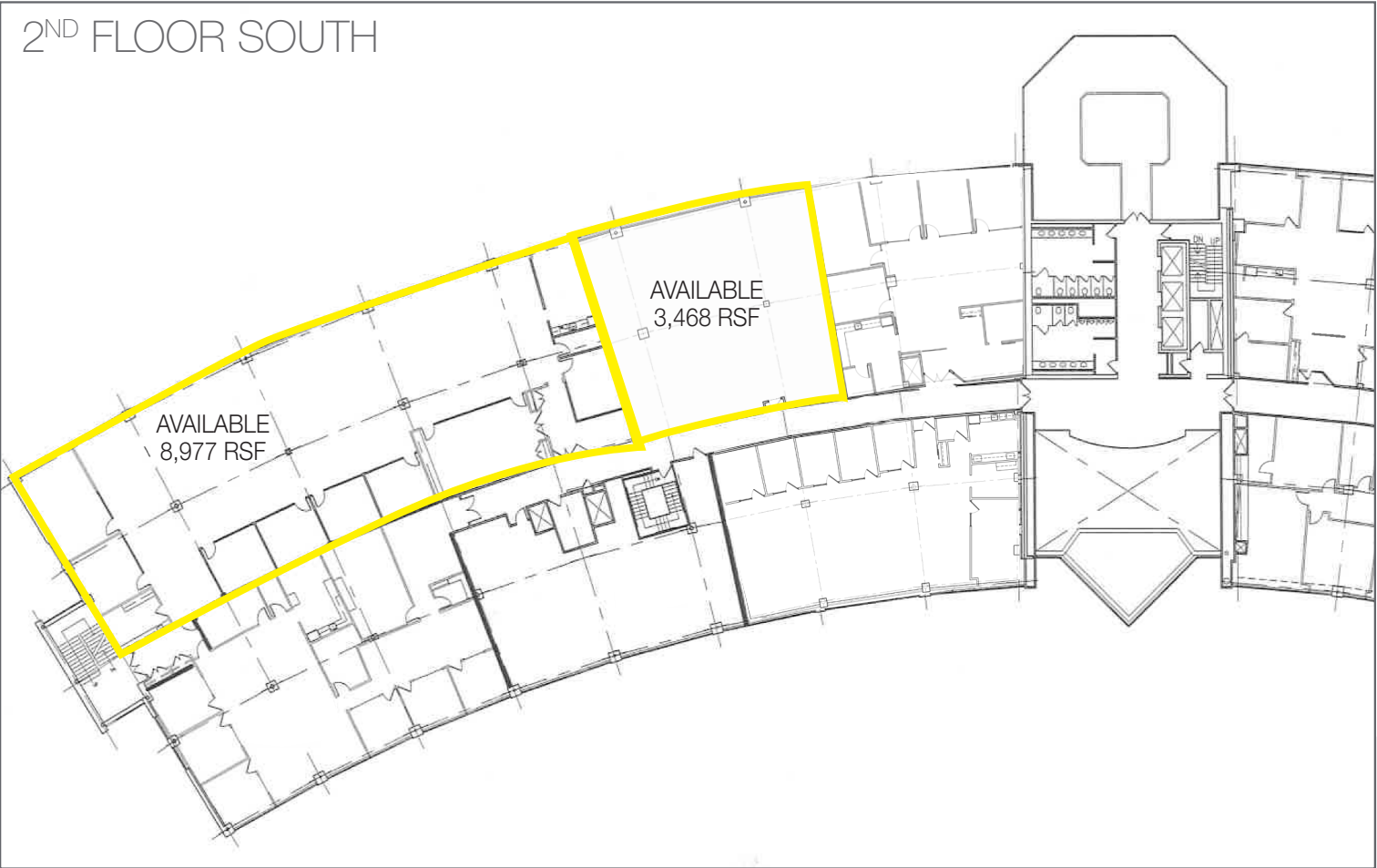
AVAILABLE
24,977 RSF
(Divisible)



1ST FLOOR SOUTH

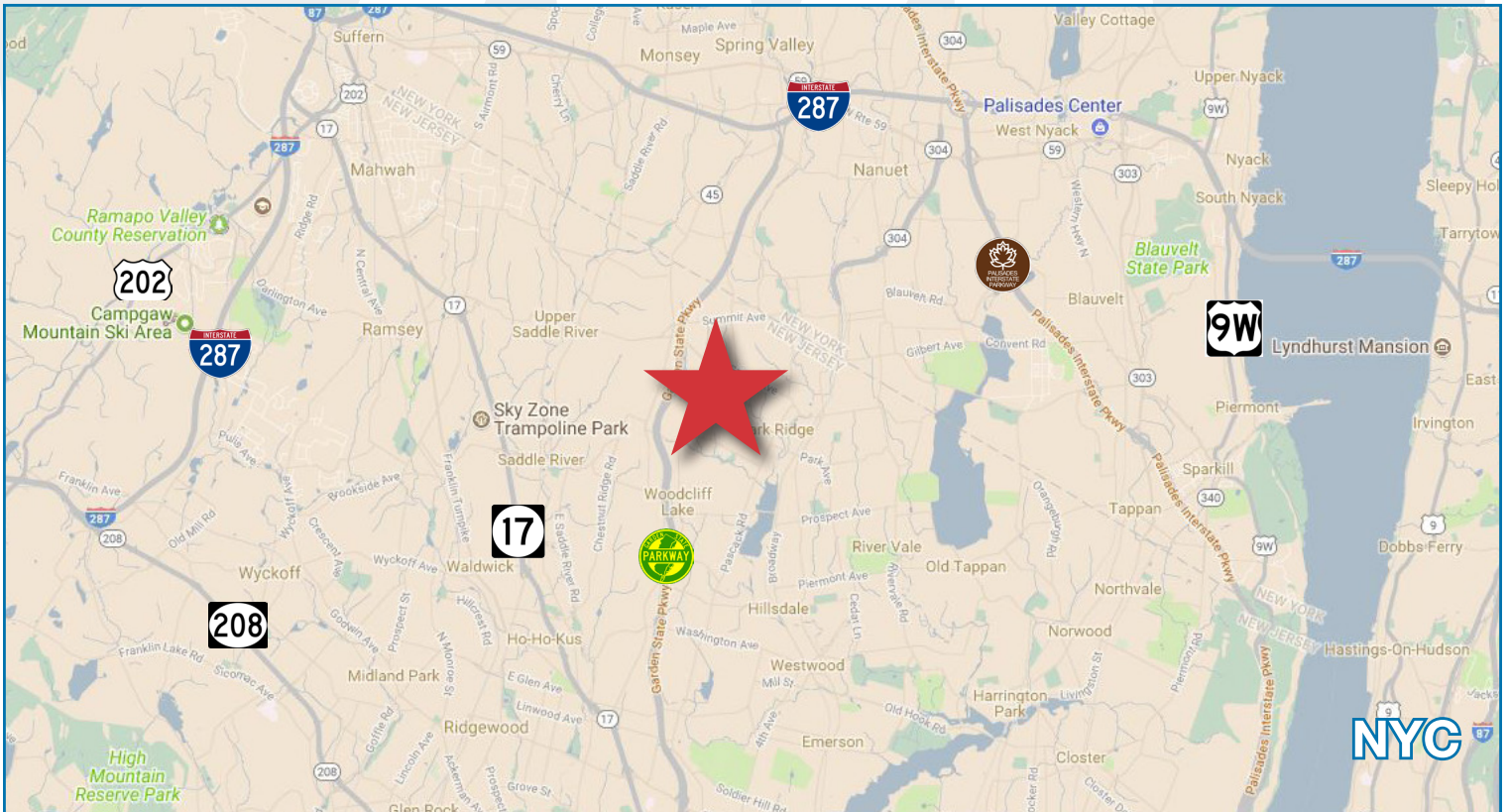


2ND FLOOR SOUTH



AERIAL & HIGHWAY MAP

M ONE MAYNARD DRIVE
PARK RIDGE, NJ



www.onemaynard.com



For more information:

Andrew Somple, SIOR

201 488 5800 x151
asomple@naihanson.com

Justin Alessio

201 488 5800 x159
jallessio@naihanson.com

Jessica Curry

201 488 5800 x199
jcurry@naihanson.com

NAI James E. Hanson
COMMERCIAL REAL ESTATE SERVICES, WORLDWIDE

195 North Street, Suite 100
Teterboro, NJ 07608
201 488 5800
naihanson.com

10 Lanidex Plaza West
Parsippany, NJ 07064
973 463 1011